

ATRIUM® SERIES LOUDSPEAKERS

THE SPEAKER FOR ALL SEASONS



SERIES | CATALOG

**polk**audio®

**ATRIUM65SDI**


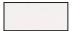
The Atrium65SDI has a unique, patented dual input/single input switch. Combined with its ingenious Dual Tweeter Array, this switch allows the Atrium65SDI to be used either as a single high performance stereo loudspeaker, or the left-or-right speaker in a high performance stereo pair.

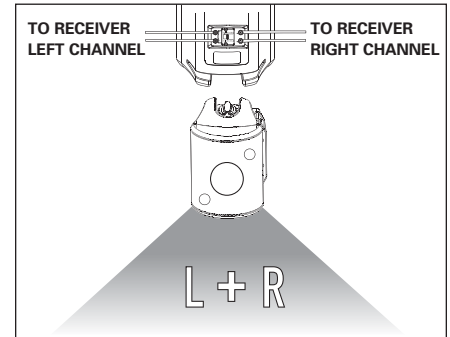
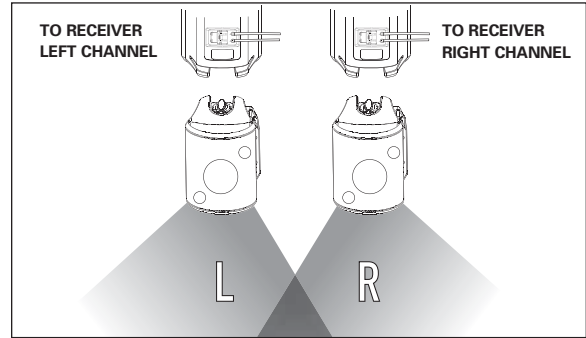
- Patented PowerPort® bass venting, with patent-pending water resistant port plug, for extraordinary bass response even in extreme conditions.
- Dual tweeter array.
- 6 1/2" dual voice coil driver delivers broad coverage and surprising low end response in situations where two speakers would be impractical.
- 1" metalized dome tweeter with neodymium magnet delivers exceptional accuracy.
- Meets or exceeds ASTM D5894-Salt Fog, Mil Standard 810 Immersion and Mil Standard 883 Method 10098 for salt and corrosion tests.\*
- Rustproof aluminum bracket allows multiple mounting options and full 90° rotation.

\*WITH SUPPLIED PORT PLUG INSTALLED. USE THE PRODUCT WITH POWERPORT VENTING IN SHELTERED LOCATIONS FOR BEST BASS RESPONSE. INSTALL THE PORT PLUG WHEN THE PRODUCT IS FULLY EXPOSED TO WATER.

SINGLE/DUAL INPUT ALL WEATHER LOUDSPEAKER  
 OVERALL DIMENSIONS:  
 13 1/2" H X 7 11/16" W X 9 5/16" D  
 (34.29CM H X 19.53CM W X 23.65CM D)  
 OVERALL FREQUENCY RESPONSE: 50Hz - 20kHz.

SEE SPECIFICATIONS FOR MORE DETAILED PRODUCT INFORMATION.

 MATTE BLACK (PAINTABLE)  MATTE WHITE (PAINTABLE)



ATRIUM65SDI



**MIL-SPEC WATER PROOFING**

Polk Audio Atrium Series Loudspeakers meet or exceed industry and military specifications for environmental endurance. The tests have coded names like "ASTM D5894-UV Salt Fog," "Mil standard 810 Immersion" and "Mil standard 883 Method 10098 for salt and corrosion." Passing them means that Polk Multi-Application Loudspeakers can withstand some of the worst that Mother Nature (or your bathroom or kitchen installation location) can dish out. See more about Mil-Spec Waterproofing at [www.polkaudio.com/catalog/technology/](http://www.polkaudio.com/catalog/technology/).



**ATRIUM60**

You'll appreciate the Atrium60 for more than its ability to fill large spaces with big, life like high quality sound, because the Atrium60 is built to withstand the elements as it delivers years of great performance.

- 6 1/2" mid/woofer with mineral-filled polypropylene cone and butyl rubber surround for excellent midrange clarity. A 2 lb. ceramic magnet ensures high output and precise control for sound big enough to fill the great outdoors.
- 1" metalized dome tweeter with neodymium magnet delivers exceptional accuracy.
- PowerPort, Polk's patented bass venting technology, delivers high efficiency and extraordinary bass response in a modest cabinet size.
- Meets or exceeds ASTM D5894-Salt Fog, Mil Standard 810 Immersion and Mil Standard 883 Method 10098 for salt and corrosion tests.\*
- All stainless steel and brass hardware for years of rustproof reliability.
- Rustproof aluminum bracket allows multiple mounting options and full 90° rotation.

\*WITH SUPPLIED PORT PLUG INSTALLED. USE THE PRODUCT WITH POWERPORT VENTING IN SHELTERED LOCATIONS FOR BEST BASS RESPONSE. INSTALL THE PORT PLUG WHEN THE PRODUCT IS FULLY EXPOSED TO WATER.

ALL WEATHER LOUDSPEAKER  
OVERALL DIMENSIONS:

13 1/2" H X 7 11/16" W X 9 5/16" D (34.29CM H X 19.53CM W X 23.65CM D)  
OVERALL FREQUENCY RESPONSE: 50Hz - 20kHz.

SEE SPECIFICATIONS FOR MORE DETAILED PRODUCT INFORMATION.



MATTE BLACK (PAINTABLE)    MATTE WHITE (PAINTABLE)



**ATRIUM60 back with PowerPort venting.**



**ATRIUM60**

**ATRIUM55**

The Atrium55 Indoor/Outdoor Loudspeaker is the ultimate in flexibility, reliability and high fidelity sound quality for the great outdoors. The Atrium55 gives you the freedom to put speakers anywhere you want high performance sound. The kitchen, the den, the guestroom, the patio or pool, even the backyard BBQ pit. The rugged Atrium55 meets or exceeds stringent industry and military specifications for full exposure to the elements for years of reliable high performance sound anywhere in and around your home.

- Atrium® loudspeakers meet or exceed Military Waterproofing Specs: ASTM D5894-UV Salt Fog, Mil 810 Immersion and Mil 883 for salt and corrosion.
- Rustproof aluminum brackets allow multiple mounting options and full 90° rotation.
- Stainless Steel and Brass hardware for years of rustproof reliability.

ALL WEATHER LOUDSPEAKER  
 OVERALL DIMENSIONS:  
 10 3/4" H X 7 1/2" W X 9 3/8" D (27.30CM H X 19.05CM W X 23.81CM D)  
 OVERALL FREQUENCY RESPONSE: 60Hz - 20kHz

SEE SPECIFICATIONS FOR MORE DETAILED PRODUCT INFORMATION.



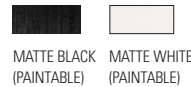
**ATRIUM50**

The Atrium50 Multi-Application Loudspeaker produces high fidelity sound quality anywhere you want great sound, whether it's entertaining outdoors by a pool, helping around the kitchen, relaxing in the family den or just hanging out in the backyard. This is one rugged speaker, built to deliver years of great performance over years of exposure to the elements.

- All stainless steel and brass hardware for years of rustproof reliability.
- Meets or exceeds ASTM D5894-UV Salt Fog, Mil standard 810 Immersion and Mil Standard 883 Method 1009 8 for salt and corrosion tests.
- Rustproof aluminum bracket allows multiple mounting options and full 90° rotation: aim them to deliver.
- The best possible sound in a variety of locations.
- Gold plated 5-way binding post inputs.
- Sculpted front baffle and rounded enclosure minimize diffraction (sound reflecting off of hard edges) for more open and lifelike imaging.

ALL WEATHER LOUDSPEAKER  
 OVERALL DIMENSIONS:  
 9 1/2" H X 6 1/4" W X 7 3/4" D (24.13CM H X 15.88CM W X 19.7CM D)  
 OVERALL FREQUENCY RESPONSE: 75Hz - 20kHz

SEE SPECIFICATIONS FOR MORE DETAILED PRODUCT INFORMATION.



**ATRIUM55**

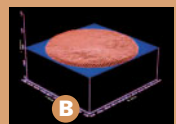
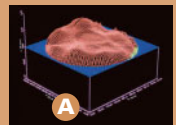


**ATRIUM50**



**DYNAMIC BALANCE®**

Advanced laser imaging technology allowed Polk Audio engineers to see the entire vibrating surface of a driver and tweeter; they could actually see the resonance develop on the speaker cones—resonance that is the root cause of loudspeaker distortion (A). Being able to see the resonance develop, they determined the “Dynamic Balance” of high-tech materials, geometry and construction that effectively tune out the offending resonance (B). Exclusive Dynamic Balance Composite Material Technology delivers sound that’s effortlessly clean and clear, even at lifelike volume. See more about Dynamic Balance at [www.polkaudio.com/catalog/technology/](http://www.polkaudio.com/catalog/technology/).



**ATRIUM45**

Like all our other multi-application loudspeakers that were created to live and play outdoors, the Atrium45 meets or exceeds several stringent military waterproofing specifications. The loudspeaker's unobtrusive, compact design makes it easy to tuck under eaves, but there's nothing small about its sound.

- Meets or exceed Military Waterproofing Specs: ASTM D5894-UV Salt Fog, Mil 810 Immersion and Mil 883 for salt and corrosion.
- Rustproof aluminum brackets allow multiple mounting options and full 90° rotation.
- Stainless steel and brass hardware for years of rustproof reliability.

ALL WEATHER LOUDSPEAKER  
 OVERALL DIMENSIONS:  
 9 1/2" H X 6 1/4" W X 7 5/8" D (24.13CM H X 15.88CM W X 19.37CM D)  
 OVERALL FREQUENCY RESPONSE: 75Hz - 20kHz

SEE SPECIFICATIONS FOR MORE DETAILED PRODUCT INFORMATION.



**ATRIUM45**

**ATRIUM45p**

The Atrium45p is for any indoor application where an extra amp would be needed. It's equipped with an on-board 50 Watt stereo amplifier, and designed for indoor use only. The self-powered Atrium45p turns a portable MP3 or CD player into a room-filling stereo, or can be used for any application where an extra amplifier would be needed.

- Front panel volume control allows you to set volume. Speaker level and line level inputs allow easy hook-up to any kind of electronics.
- Meets or exceed Military Waterproofing Specs: ASTM D5894-UV Salt Fog, Mil 810 Immersion and Mil 883 for salt and corrosion.
- Rustproof aluminum brackets allow multiple mounting options and full 90° rotation.
- Stainless steel and brass hardware for years of rustproof reliability.
- Gold plated 5-way binding post inputs.
- Sculpted front baffle and rounded enclosure minimize diffraction (sound reflecting off of hard edges) for more open and lifelike imaging.

SELF-POWERED LOUDSPEAKER, 50W INDOOR USE ONLY  
 OVERALL DIMENSIONS:  
 9 1/2" H X 6 1/4" W X 7 5/8" D  
 (24.13CM H X 15.88CM W X 19.37CM D)  
 OVERALL FREQUENCY RESPONSE: 60Hz - 20kHz

SEE SPECIFICATIONS FOR MORE DETAILED PRODUCT INFORMATION.



**ATRIUM45p**



## ALL WEATHER LOUDSPEAKERS

	<b>ATRIUM65sdi</b>	<b>ATRIUM60</b>	<b>ATRIUM55</b>
Driver Complement	1 - 6 1/2" (16.5cm) dual voice coil driver, 2 - 1" (2.5cm) metalized dome tweeters with neodymium magnets	1 - 6 1/2" (16.5cm) mineral filled polymer cone, 1 - 1" (2.5cm) metalized dome tweeter with neodymium magnet	1 - 5 1/4" (13.3cm) mineral filled polymer cone, 1 - 1" (2.5cm) soft dome tweeter with neodymium magnet
Power Handling (continuous)	125 Watts	n/a	100 Watts
Power Handling (Peak)	250 Watts	n/a	200 Watts
Frequency Response: Overall	50Hz - 20kHz	50Hz - 20kHz	60Hz - 20kHz
Impedance	compatible with 8 Ohms outputs	compatible with 8 Ohms outputs	compatible with 8 Ohms outputs
Recommended Amplification	10 - 125 Watts/channel	10 - 100 Watts / channel	10 - 100 Watts / channel
Efficiency	90dB	89dB	90dB
Available Finish	matte black or matte white paintable	matte black or matte white paintable	matte black or matte white paintable
Product Weight / Shipping Weight	12 lbs/ea (5.4kg) / 13 lbs/ea (5.9kg)	11.5 lbs/ea (5.2kg) / 27 lbs/pr (12.25kg)	7.5 lbs/ea (3.4kg) / 16 lbs/pr (7.26kg)
Dimensions	13 1/2" H x 7 11/16" W x 9 5/16" D 34.3cm H x 19.5cm W x 23.6cm D	13 1/2" H x 7 11/16" W x 9 5/16" D 34.3cm H x 19.5cm W x 23.7cm D	10 3/4" H x 7 1/2" W x 9 3/8" D 27.3cm H x 19.1cm W x 23.8cm D
Features	PowerPort, 5-way binding posts, dual/single input switch, Military Spec Waterproofing	PowerPort, rustproof hardware, 5-way binding posts, Military Spec Waterproofing	rustproof hardware, 5-way binding posts, Military Spec Waterproofing

## ALL WEATHER LOUDSPEAKERS

	<b>ATRIUM50</b>	<b>ATRIUM45</b>	<b>ATRIUM45p †*</b>
Driver Complement	1 - 4 1/2" (11.43cm) mineral filled polymer cone, 1 - 3/4" (1.9cm) soft dome tweeter with neodymium magnet	1 - 4 1/2" (11.5cm) mineral filled polymer cone, 1 - 3/4" (1.9cm) soft dome tweeter with neodymium magnet	1 - 4 1/2" (11.5cm) mineral filled polymer cone, 1 - 3/4" (1.9cm) soft dome tweeter with neodymium magnet
Power Handling (Continuous)	100 Watts	80 Watts	25 Watts
Power Handling (Peak)	200 Watts	160 Watts	100 Watts
Frequency Response: Overall	75Hz - 20kHz	75Hz - 20kHz	60Hz - 20kHz
Impedance	compatible with 8 Ohms outputs	compatible with 8 Ohms outputs	n/a
Recommended Amplification	10 - 80 Watts / channel	10 - 80 Watts / channel	n/a
Efficiency	89dB	89dB	n/a
Available Finish	matte black or matte white paintable	matte black or matte white paintable	matte black or matte white paintable
Product Weight / Shipping Weight	5.5 lbs/ea (2.5kg) / 11 lbs/pr (5kg)	5.5 lbs/ea (2.5kg) / 11 lbs/pr (5kg)	6.5 lbs/ea (3kg) / 16 lbs/pr (7.26kg)
Dimensions	9 1/2" H x 6 1/4" W x 7 3/4" D 24.1cm H x 15.9cm W x 19.7cm D	9 1/2" H x 6 1/4" W x 7 5/8" D 24.1cm H x 15.9cm W x 19.4cm D	9 1/2" H x 6 1/4" W x 7 5/8" D 24.1cm H x 15.9cm W x 19.4cm D
Features	rustproof hardware, Military Spec Waterproofing, 5-way binding posts	rustproof hardware, Military Spec Waterproofing, 5-way binding posts	speaker level & line level inputs, front panel volume control, 5-way binding posts

\* Not for outdoor use.

† Atrium45p is also available in 230 VAC.

We're fanatics when it comes to providing you useful, accurate information that can help you evaluate our products. But as we all know, we live in an imperfect world. At least some of us do. That's why performance specifications and product dimensions are subject to change without notice. For the most current specifications see our website, [www.polkaudio.com/home](http://www.polkaudio.com/home).

Polk Audio is a Directed Electronics company which trades on NASDAQ under the symbol DEIX. Investor information can be found at <http://investor.directed.com>.

Polk Audio, Polk, PowerPort, Dynamic Balance, F/X, Atrium, Big Speaker Sound Without The Big Speaker, High Velocity Compression Drive, Acoustic Resonance Control, ARC Port, Casket Basket, I-Sonic, SurroundBar & SDA are registered trademarks of Britannia Investment Corporation used under license by Polk Audio, Incorporated. Polk Audio Designs & miDock are trademarks of Britannia Investment Corporation used under license by Polk Audio, Incorporated.

### POLK AUDIO

5601 METRO DRIVE  
BALTIMORE, MD 21215  
[WWW.POLKAUDIO.COM](http://WWW.POLKAUDIO.COM)

CUSTOMER SERVICE:  
800-377-7655 (USA & CANADA)  
410-358-3600 (WORLDWIDE)

COPYRIGHT© APRIL 2008  
ALL RIGHTS RESERVED.