

LCi SERIES LOUDSPEAKERS

“INVISIBLE” AUDIOPHILE SOUND



SERIES | CATALOG

**polk**audio®

**LC265i-IP, LC80i-IP**

Polk Audio® LCi-IP ultra high performance loudspeakers are among the world's first active IP in-wall and in-ceiling loudspeakers. They were created for IP-networked systems but are also compatible with analog systems. A network decoder card (sold separately), built-in Digital Signal Processor (DSP) and the Performance Optimization Wizard Software enables every LCi-IP speaker to be set up for maximum performance in any room environment. What's more, LCi-IP speakers already come with an award-winning reputation, because they use the same driver technologies as Polk Audio's award winning high-end LSi Series.

**LC265i-IP**

OVERALL DIMENSIONS:

20 13/16" H X 8 1/2" W X 3 7/16" D (52.86CM H X 21.59CM W X 8.73CM D)

OVERALL FREQUENCY RESPONSE: VARIABLE

SEE SPECIFICATIONS FOR MORE DETAILED PRODUCT INFORMATION.



MATTE WHITE (PAINTABLE)



LC265i-IP

- Pure digital signal all the way to the power amplifier outputs, with no losses and superb fidelity.
- DSP allows unprecedented room optimization EQ for sound quality that can exceed free-standing speakers.
- Foamed polypropylene Dynamic Balance® cones (LC265i-IP): stiff and yet surprisingly lightweight for spectacular midrange clarity, punchy bass and high efficiency.
- Casket Basket®—composite driver baskets keep moving parts in rigid alignment and damps performance-robbing resonance.
- The LC265i was the first in-wall speaker to feature the patented PowerPort® bass venting system for superior bass response with low distortion.
- Round model (LC80i-IP) features 15° driver offset for better midrange clarity and imaging anywhere in the room.
- Ring Radiator tweeters (the same tweeters used in the LSi Series) for smooth, extended highs with incredible accuracy and astonishing detail.

**LC80i-IP**

OVERALL DIMENSIONS:

10 5/8" DIAMETER X 7 3/4" DEPTH (27CM DIAMETER X 12.9CM DEPTH)

OVERALL FREQUENCY RESPONSE: VARIABLE

SEE SPECIFICATIONS FOR MORE DETAILED PRODUCT INFORMATION.



MATTE WHITE (PAINTABLE)



LC80i-IP

polk  
technology

**PERFORMANCE OPTIMIZATION WIZARD**

The Performance Optimization Wizard is a PC-based software interface that makes speaker position and room acoustics optimization virtually foolproof. The program enables you to optimize the performance characteristics of our LCi-IP speakers specifically to their location in a given room and to the physical characteristics of that room. The Performance Optimization Wizard asks a series of basic speaker configuration questions and a series of questions about the room environment. You simply access the DSP using a laptop PC connected via a mini USB port on the front baffle of the speaker, or through the network when used in an IP network. See more about the Performance Optimization Wizard at [www.polkaudio.com/catalog/technology/](http://www.polkaudio.com/catalog/technology/).

**LC265i**

Polk's LC*i* series loudspeakers are in-wall speakers that deliver the performance of traditional speakers. They feature the Ring Radiator Tweeter for unprecedented detail, and Dynamic Balance Aerated Polypropylene Cones in rigid Casket Basket drivers for realistically detailed sound. Replace your cabinet speakers without sacrificing performance, and use LC*i* speakers to achieve the ultimate "stealth" home theater!

- Patented PowerPort bass venting system.
- Dual user controls ensure perfect sound in any installation location.
- In-wall performance enclosures available for exact volume enclosure performance.

## OVERALL DIMENSIONS:

20 13/16" H X 8 1/2" W X 3 7/16" D (52.86CM H X 21.59CM W X 8.73CM D)

OVERALL FREQUENCY RESPONSE: 28Hz - 27kHz

SEE SPECIFICATIONS FOR MORE DETAILED PRODUCT INFORMATION.



MATTE WHITE (PAINTABLE)

**LC65i**

Build an "invisible" audio system that delivers the superior sound you crave without taking up any floor space. LC*i* Series speakers, voice-matched to the LS*i* Series, sacrifice nothing when it comes to all out, high-end audio thrills. LC*i* Series in-wall performance enclosures are available for exact volume enclosure performance in pre-build installations.

- PowerPort bass venting system for extended deep bass response, improved efficiency and lower distortion.
- 15° swivel ring radiator tweeter for direct high frequency control and excellent imaging.
- Aerated Polypropylene Cone is stiff yet lightweight—20% lighter than polypropylene and 35% lighter than aluminum—for spectacular midrange clarity.
- Tweeter level switch tailors highs for your room acoustics; wall distance toggle flattens response in corner locations.

## OVERALL DIMENSIONS:

14 1/8" H X 8 1/2" W X 3 1/4" D (35.88CM H X 21.59CM W X 8.255CM D)

OVERALL FREQUENCY RESPONSE: 30Hz - 27kHz

SEE SPECIFICATIONS FOR MORE DETAILED PRODUCT INFORMATION.



MATTE WHITE (PAINTABLE)



LC265i



LC65i

**PERFORMANCE ENCLOSURE**

Custom engineered Polk Audio Performance Enclosures offer the best possible sound quality with pre-construction and major renovation installations of Polk In-Wall Loudspeakers, especially LC*i* & TC*i* Series In-Wall & In-Ceiling models. They are "perfect-volume" cabinets that provide Polk LC*i* & TC*i* speakers with the ideal volume and internal damping material for optimum bass performance. Constructed of rigid MDF and extensively braced to ensure that all of the speaker's energy works to produce tight, clean, low distortion bass, Polk Performance Enclosures guarantee the most consistent, dynamic, full-spectrum sound, with superior bass extension and superior room-to-room sound isolation. See more about Polk Performance Enclosures at [www.polkaudio.com/catalog/technology/](http://www.polkaudio.com/catalog/technology/).



polk  
technology

**LC80i**

This round in-ceiling loudspeaker, with an 8" mineral filled polypropylene cone in a rigid casket basket driver and aimable ring radiator tweeter, gives you the ultimate in flexibility and high performance. Use LCi in-ceiling speakers to build a truly "stealth" high performance home theater or multi-channel music system. A trio of easy user controls helps tailor the sound to your particular installation demands.

- Innovatively placed swivel ring radiator tweeter, the same tweeter used in the LSi Series, for direct high frequency control and excellent imaging.
- 15° driver offset & rotating tweeter delivers uniform coverage, for the performance of traditional speakers in practically "invisible" in-ceiling speakers.
- Tweeter level switch tailors highs for your room acoustics; wall distance toggle flattens response in corner locations, and off-axis targeting switch boosts selected frequencies for better off-axis imaging.

OVERALL DIMENSIONS:  
10 5/8" DIAMETER X 5 1/16" DEPTH (26.99CM DIAMETER X 12.86CM DEPTH)  
OVERALL FREQUENCY RESPONSE: 30Hz-27kHz.

SEE SPECIFICATIONS FOR MORE DETAILED PRODUCT INFORMATION.



MATTE WHITE (PAINTABLE)

**LC60i**

This smaller LCi speaker doesn't skimp on high performance. Timbre-matched with the LSi Series, use the LC60i in smaller rooms or areas where large in-wall/in-ceiling or floorstanding loudspeakers would never fit. Excellent for high performance second-zone use or as stealth surrounds in a high performance LSi Series multi-channel music or home theater system. A paintable grille and flange allow this little performer to virtually disappear in your room!

- Casket Basket composite driver basket keeps moving parts in rigid alignment and damps performance-robbing resonance.
- Aimable ring radiator tweeter for direct high frequency control and excellent imaging.
- Easy, secure, no mess installation with Polk's rotating cam system.
- Tweeter level switch tailors highs for your room acoustics; wall distance toggle flattens response in corner locations, and off-axis targeting switch boosts selected frequencies for better off-axis imaging.

OVERALL DIMENSIONS:  
9 5/16" DIAMETER X 5" DEPTH (23.65CM DIAMETER X 12.7CM DEPTH)  
OVERALL FREQUENCY RESPONSE: 30Hz - 27kHz.

SEE SPECIFICATIONS FOR MORE DETAILED PRODUCT INFORMATION.



MATTE WHITE (PAINTABLE)



LC80i

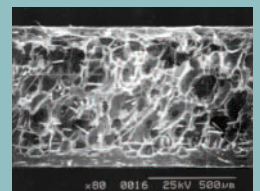


LC60i

polk  
technology

**AERATED POLYPROPYLENE CONE**

Polk Audio LCi Series Loudspeakers, like the high end LSi Series home speakers, feature ultra stiff yet surprisingly lightweight Aerated Polypropylene Cones. They're 20% lighter than conventional poly and 35% lighter than aluminum cones. Dynamic Balance composite materials tune out driver resonance, and foamed air adds damping without adding mass. These cones deliver spectacular midrange clarity, punchy bass and high efficiency. See more about Aerated Polypropylene Cones at [www.polkaudio.com/catalog/technology/](http://www.polkaudio.com/catalog/technology/).



Scanning electron microscope image of Aerated Poly Cone showing air pockets.

**LC80F/x®**

This round in-ceiling loudspeaker, with an 8" mineral filled polypropylene cone in a rigid Casket Basket driver and aimable ring radiator tweeter, gives you the ultimate in flexibility and high performance. Use LC*i* in-ceiling speakers to build a truly "stealth" high performance home theater or multi-channel music system. A trio of easy user controls helps tailor the sound to your particular installation demands.

- Innovatively placed swivel ring radiator tweeter, the same tweeter used in the LS*i* Series, for direct high frequency control and excellent imaging.
- 15° driver offset & rotating tweeter delivers uniform coverage, for the performance of traditional speakers in practically "invisible" in-ceiling speakers.
- Tweeter level switch tailors highs for your room acoustics; wall distance toggle flattens response in corner locations, and off-axis targeting Switch boosts selected frequencies for better off-axis imaging.

OVERALL DIMENSIONS:  
10 11/16" DIAMETER X 5 1/16" DEPTH (27.15CM DIAMETER X 13.49CM DEPTH)  
OVERALL FREQUENCY RESPONSE: 30Hz-27kHz

SEE SPECIFICATIONS FOR MORE DETAILED PRODUCT INFORMATION.



MATTE WHITE (PAINTABLE)

**LC65F/x**

Build an "invisible" audio system that delivers the superior sound you crave without taking up any floor space. LC*i* Series speakers, voice-matched to the LS*i* Series, sacrifice nothing when it comes to all out, high-end audio thrills. LC*i* Series in-wall performance enclosures are available for exact volume enclosure performance in pre-build installations.

- PowerPort bass venting system for extended deep bass response, improved efficiency and lower distortion.
- 15° swivel ring radiator tweeter for direct high frequency control and excellent imaging.
- Aerated polypropylene cone is stiff yet lightweight—20% lighter than polypropylene and 35% lighter than aluminum—for spectacular midrange clarity.
- Tweeter level switch tailors highs for your room acoustics; wall distance toggle flattens response in corner locations.

OVERALL DIMENSIONS:  
14 5/16" H X 8 1/2" W X 3 3/4" D (36.32CM H X 21.59CM W X 9.53CM D)  
OVERALL FREQUENCY RESPONSE: 30Hz - 27kHz

SEE SPECIFICATIONS FOR MORE DETAILED PRODUCT INFORMATION.



MATTE WHITE (PAINTABLE)



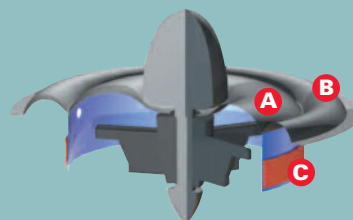
LC80F/x



LC65F/x

**RING RADIATOR TWEETER**

The Ring Radiator tweeter, usually found only in speakers costing thousands more than Polk speakers, gives the LC*i* Series its incredible accuracy and astonishing detail, to reveal the nuances of your favorite CDs, high definition discs and LPs. The ultra-light woven ring radiator diaphragm is supported at two hinge points (A & B) and is driven by a centrally positioned voice coil (C). With a higher ratio of supported material than conventional tweeters, there's less opportunity for performance-robbing resonance to develop. This remarkable tweeter delivers accurate high frequencies with precise detail and wide dispersion. See more about The Ring Radiator at [www.polkaudio.com/catalog/technology/](http://www.polkaudio.com/catalog/technology/).



**LCi*c***

The LC*c* is a dedicated center channel loudspeaker that delivers LC*i* Series performance. They feature the ring radiator tweeter for unprecedented detail, and dynamic balance aerated polypropylene cones in rigid Casket Basket drivers for realistically detailed sound. Replace your cabinet speakers without sacrificing performance, and use LC*i* speakers to achieve the ultimate “stealth” home theater!

- Patented PowerPort bass venting system.
- Room environment controls ensure perfect sound in any installation location.
- In-wall performance enclosures available for exact volume enclosure performance.

OVERALL DIMENSIONS:  
8 15/16" H X 15 5/8" W (22.7CM H X 39.69CM W)  
OVERALL FREQUENCY RESPONSE: 30Hz - 27kHz

SEE SPECIFICATIONS FOR MORE DETAILED PRODUCT INFORMATION.



MATTE WHITE (PAINTABLE)



LC*c*

polk  
technology

**CASKET BASKET®**

High tech composite materials make Polk Audio Casket Basket Driver Baskets acoustically inert (acoustically “dead,” get it?). Casket Baskets keep the moving parts of the LC*i* Series drivers in rigid alignment and successfully damp performance-robbing resonance. See more about Casket Baskets at [www.polkaudio.com/catalog/technology/](http://www.polkaudio.com/catalog/technology/).



CUSTOM INSTALL LOUDSPEAKERS	LC265i-IP	LC80i-IP	LC265i
Driver Complement	1 - 6 1/2" (16.51cm) aerated polypropylene Dynamic Balance bass driver, 1 - 6 1/2" (16.51cm) Dynamic Balance mid/bass driver, 1 - 1" (2.5cm) Ring Radiator tweeter	1 - 8" (20.3cm) aerated polypropylene Dynamic Balance mid/bass driver, 1 - 1" (2.5cm) Ring Radiator tweeter	1 - 6 1/2" (16.51cm) aerated polypropylene Dynamic Balance bass driver, 1 - 6 1/2" (16.51cm) Dyn. Bal. mid/bass driver, 1" (2.5cm) Ring Radiator tweeter
Shape	rectangle	round	rectangle
Frequency Response: Overall / -3dB	20Hz - 27kHz / 35Hz - 26Hz	25Hz - 27kHz / 40Hz - 26Hz	28Hz - 27kHz / 43Hz - 26kHz
Amplifier Power (Continuous Ratings)	200 Watts continuous average power 100 Watts RMS woofer 8 Ohms 75 Watts RMS mid 8 Ohms 25 Watts RMS tweeter 4 Ohms	100 Watts continuous average power 75 Watts RMS mid 4 Ohms 25 Watts RMS tweeter 4 Ohms	N/A
Impedance	amp included	amp included	compatible with 4 Ohms outputs
Recommended Amplification	amp included	amp included	10 - 200 Watts/channel
Efficiency	amp included	amp included	91dB
Available Finish	matte white (paintable)	matte white (paintable)	matte white (paintable)
Product Weight / Shipping Weight	8.7 lbs each / 11.6 lbs each (3.9 kg each / 5.3 kg each)	4.6 lbs each / 8 lbs each (2.08 kg each / 3.62 kg each)	9.5 lbs each / 11 lbs each (4.31 kgs each / 4.94 kgs each)
Overall Dimensions (Depth measured from the deepest component to the back of the baffle)	20 13/16" H x 8 1/2" W x 3 7/16" D (52.86cm H x 21.59cm W x 8.73cm D)	10 5/8" Diameter x 7 3/4" Depth (27cm Diameter x 12.9cm Depth)	20 13/16" H x 8 1/2" W x 3 7/16" D (52.86cm H x 21.59cm W x 8.73cm D)
Depth assuming 1/2" Drywall	2 15/16" (7.46cm)	7 1/4" (18.4cm)	2 15/16" (7.5cm)
Cutout Dimensions	19 3/16" H x 7 1/4" W (48.74cm H x 18.41cm W)	9 3/8" Diameter (23.3cm Diameter)	19 3/16" H x 7 1/4" W (48.74cm H x 18.41cm W)
Features	self amplified, built-in DSP, Performance Optimization Wizard	self amplified, built-in DSP, Performance Optimization Wizard	PowerPort, Casket Basket

CUSTOM INSTALL LOUDSPEAKERS	LC65i	LC80i	LC60i
Driver Complement	1 - 6 1/2" (16.51cm) Aerated Polypropylene Dynamic Balance mid/bass driver, 1 - 1" (2.5cm) Ring Radiator tweeter	1 - 8" (20.3cm) Dynamic Balance mid/bass driver, 1 - 1" (2.5cm) Ring Radiator tweeter	1 - 6 1/2" (16.5cm) Dynamic Balance mid/bass driver, 1 - 1" (2.5cm) Ring Radiator tweeter
Shape	rectangle	round	round
Frequency Response: Overall / -3dB	30Hz - 27kHz / 45Hz - 26kHz	30Hz - 27kHz / 45Hz - 26kHz	30Hz - 27kHz / 45Hz - 26kHz
Impedance	compatible with 4 Ohms	compatible with 4 Ohms	compatible with 4 Ohms
Recommended Amplification	10 - 125 Watts/channel	10 - 125 Watts/channel	10 - 125 Watts/channel
Efficiency	90dB	90dB	90dB
Available Finish	matte white (paintable)	matte white (paintable)	matte white (paintable)
Product Weight / Shipping Weight	4.5 lbs each / 11 lbs pair (2.04 kgs each / 4.94 kgs pair)	4.5 lbs each / 11 lbs pair (2.04 kgs each / 4.94 kg pair)	4 lbs each / 7 lbs pair (1.81 kgs each / 3.18 kg pair)
Overall Dimensions (Depth measured from the deepest component to the back of the baffle)	14 1/8" H x 8 1/2" W x 3 1/4" D (35.88cm H x 21.59cm W x 8.255cm D)	10 5/8" Diameter x 5 1/16" Depth (26.99cm Diameter x 12.86cm Depth)	9 5/16" Diameter x 5" Depth (23.65cm Diameter x 12.7cm Depth)
Depth Assuming 1/2" Drywall	2 3/4" (7.6cm)	4 9/16" (8.1cm)	4 1/2" (11.4cm)
Cutout Dimensions	12 3/4" H x 7 1/4" W (32.4cm H x 18.4cm W)	9 3/8" Diameter (23.81cm)	8 3/16" Diameter (20.48cm)
Features	15" swivel tweeter, rust-resistant hardware Tweeter level & wall distance switches	15" driver offset, user controls	15" driver offset, user controls

CUSTOM INSTALL LOUDSPEAKERS	LC80F/x	LC65F/x	LCi
Driver Complement	1 - 8" (20.32cm) aerated polypropylene Dynamic Balance bass driver cone, 1 - 2 3/4" (1.91cm) Ring Radiator tweeter	1 - 6 1/2" (16.51cm) aerated polypropylene Dynamic Balance driver cone 2 - 3/4" (1.91cm) Ring Radiator tweeters	1 - 6 1/2" (16.51cm) Dynamic Balance bass driver, 1 - 6 1/2" (16.51cm) Dynamic Balance mid/bass driver, 1 - 1" (2.5cm) Dynamic Balance Ring Radiator tweeter
Shape	round	rectangle	rectangle
Frequency Response: Overall	30Hz - 27kHz / 45Hz - 26kHz	30Hz - 27kHz / 45Hz - 26kHz	30Hz - 27kHz / 45Hz - 26kHz
Impedance	compatible with 4 Ohms	compatible with 4 Ohms	compatible with 4 Ohm
Recommended Amplification	10 - 125 Watts/channel	10 - 125 Watts/channel	10 - 150 Watts/channel
Efficiency	88dB	88dB	91dB
Available Finish	matte white (paintable)	matte white (paintable)	matte white (paintable)
Product Weight / Shipping Weight	4lbs each / lbs pair (1.81kgs each / kgs pair)	4.35 lbs each / 11 lbs pair (1.97 kg each / 5 kg pair)	8.5 lbs each / lbs each (3.86 kgs each / kg each)
Overall Dimensions (Depth measured from the deepest component to the back of the baffle)	10 11/16" Diameter x 5 5/16" Depth (27.15cm Diameter x 13.49cm Depth)	14 5/16" H x 8 1/2" W x 3 3/4" D (36.32cm H x 21.59cm W x 9.53cm D)	8 5/16" H x 15 5/8" W (22.7cm H x 39.69cm W)
Depth assuming 1/2" Drywall	4 13/16" (12.22cm)	3 1/4" (8.25cm)	3 1/2" (8.89cm)
Cutout Dimensions	9 3/8" Diameter (23.81cm)	12 3/4" H x 7 1/4"W 32.38cm H x 18.41cm W	7 5/8" H x 13 1/8"W 19.39cm H x 33.34cm W
Features	15° driver offset, room environment controls	solid/diffuse switch, room environment controls	rust-resistant hardware, room environment controls, fits between 16" o.c. studs

We're fanatics when it comes to providing you useful, accurate information that can help you evaluate our products. But as we all know, we live in an imperfect world. At least some of us do. That's why performance specifications and product dimensions are subject to change without notice. For the most current specifications see our website, [www.polkaudio.com/home](http://www.polkaudio.com/home).

Polk Audio is a Directed Electronics company which trades on NASDAQ under the symbol DEIX. Investor information can be found at <http://investor.directed.com>.

Polk Audio, Polk, PowerPort, Dynamic Balance, F/X, Atrium, Big Speaker Sound Without The Big Speaker, High Velocity Compression Drive, Acoustic Resonance Control, ARC Port, Casket Basket, I-Sonic, SurroundBar & SDA are registered trademarks of Britannia Investment Corporation used under license by Polk Audio, Incorporated. Polk Audio Designs & miDock are trademarks of Britannia Investment Corporation used under license by Polk Audio, Incorporated.