

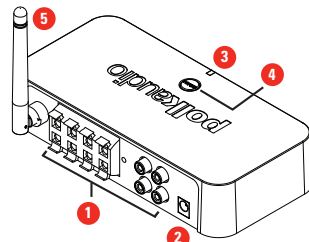
**Spectacular Surround Sound In Minutes
With No Drilling, No Wires, No Mess**

Not only does the F/X[®] not need wires, but it doesn't need multiple enclosures or dedicated power amps either. It's designed to deliver surround sound from a single cabinet. The new F/X[®] Wireless Surround employs our Controlled Dispersion Array™ and Polk Digital Logic™ technologies to solve the installation problems posed by conventional multi-enclosure, wired surround sound speaker systems. A 2.4 GHz transmitter that connects to your home theater receiver or surround sound processor lets you enjoy the convenience of wireless 5.1, 7.1, and 9.2 surround operation, and the simplicity of placing the F/X loudspeaker on the floor, a table or a shelf.

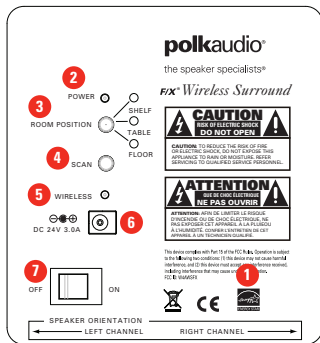


Transmitter Inputs

- 1 **Audio Inputs**—Speaker level and line level for surround and surround back channels.
- 2 **Power Connection**—The transmitter power supply connects here.
- 3 **Power LED**—Shines blue to indicate the transmitter is active.
- 4 **SCAN Button**—Push this button to re-establish the “communications” link between the transmitter and the loudspeaker.
- 5 **External Antenna**—Adjustable for optimal wireless transmission.



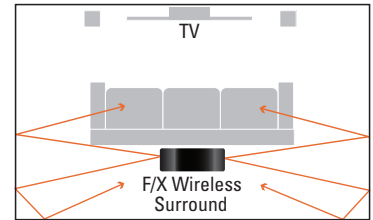
F/X Wireless Surround Controls



- 1 **ENERGY STAR[®] Compliant**
- 2 **Power LED**—Shines blue when the wireless connection is active.
- 3 **Room Position Switch**—This 3-position switch controls placement based DSP settings (floor, table or shelf).
- 4 **SCAN**—Push this button to re-establish the “communications” link between the transmitter and the loudspeaker.
- 5 **Wireless LED**—Shines blue to indicate the transmitter and loudspeaker connected wirelessly.
- 6 **Power Connection**—Receiver/amplifier power supply connects here.
- 7 **AC Mains**—The AC Mains switch turns the loudspeaker on and off, though you may leave the switch turned on all the time.

**Amazing Jaw-Dropping Surround Experience
From A Single Powered Wireless Speaker System**

Controlled Dispersion Array was first developed by Polk's analysis of head related transfer functions during the development of our patented SDA[®] technology. A small transceiver included with the system connects the A/V receiver's surround channels to the F/X loudspeaker wirelessly.



When placed behind the listening area, the F/X's single enclosure loudspeaker system creates a convincing left, right, and rear surround stage. The innovative F/X speaker system consists of four 2 1/2" full range drivers and a 5 1/4" woofer, powered by a compact multichannel 120 Watt amplifier. The system reproduces 5.1, 7.1, 7.2 and 9.2 surround program material and features a 3-position DSP control that optimizes the image height for floor, table and shelf placement.

Specifications

F/X Wireless Surround

Driver Complement	Four 2 1/2" full range Dynamic Balance [®] drivers, One 5 1/4" driver (Dynamic Balance woofer)
Overall Frequency	50 Hz-20 kHz
System Power	120 Watts
Dimensions	8 1/8" H x 19 1/2" W x 7 3/4" D 20.64 cm H x 49.53 cm W x 19.69 cm D
Warranty	3 years electronics, 5 years speakers, parts and labor (original purchaser)

Specifications, dimensions and features subject to change without notice. For more information call us at 1-800-377-7655 (USA and Canada). Outside of North America call +1 (410) 358-3600.